

J:\01 PROJECTS\2017 Jobs\17M-01494-00 - 11-19 Yorkville\CAD\2019-05-21\DWG

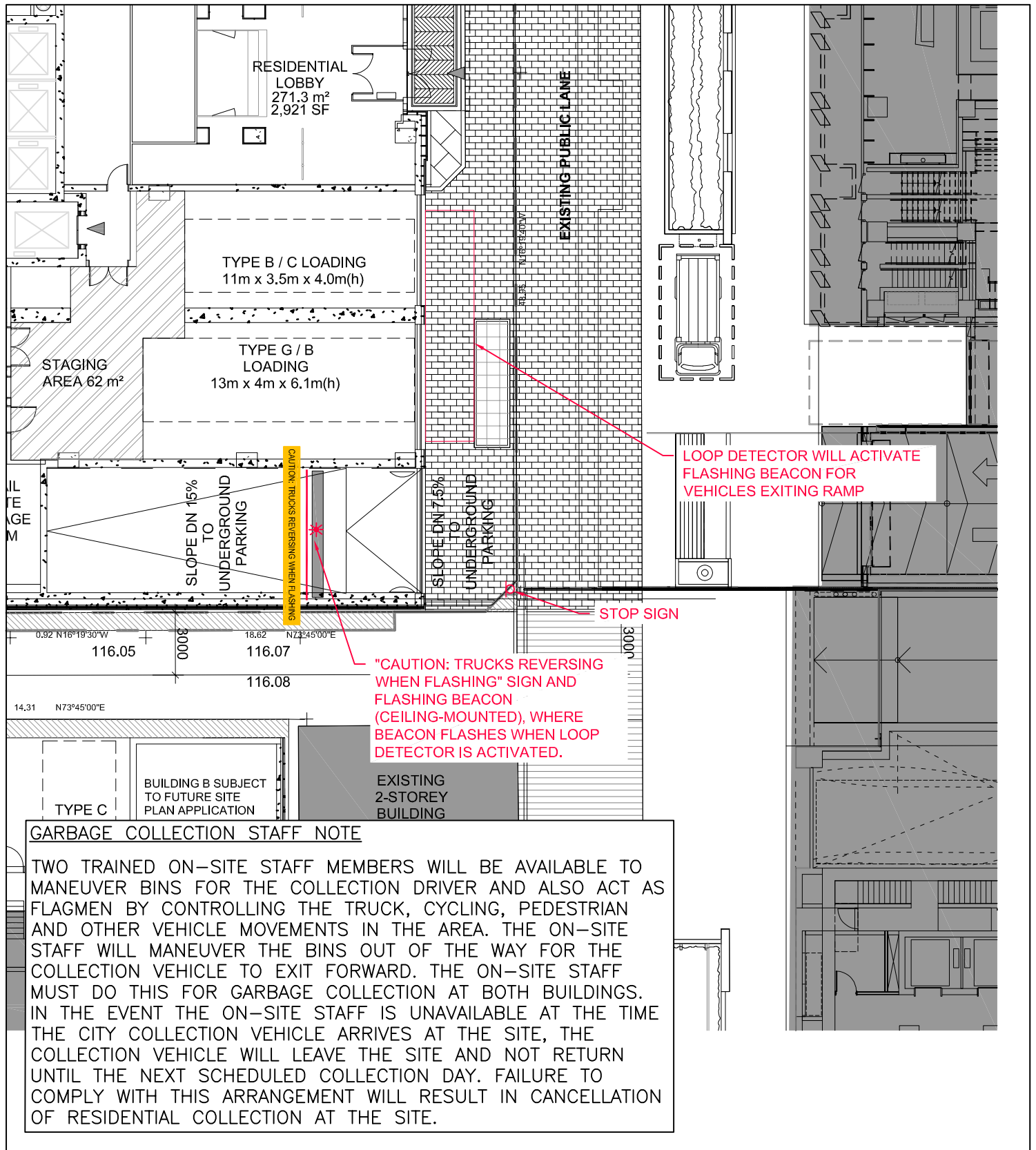
Source: 181206 11 Yorkville-Sheet - A105 - Ground Floor Plan, from Sweeny & Co Architects, May 29, 2019

Scale: 1:250



Figure 1
Ground Floor Pick-Up/Drop-Off
11-21 Yorkville Avenue Response to Comments

J:\01 PROJECTS\2017 Jobs\17M-01494-00 - 11-19 Yorkville\CAD\2019-05-21\DWG



GARBAGE COLLECTION STAFF NOTE

TWO TRAINED ON-SITE STAFF MEMBERS WILL BE AVAILABLE TO MANEUVER BINS FOR THE COLLECTION DRIVER AND ALSO ACT AS FLAGMEN BY CONTROLLING THE TRUCK, CYCLING, PEDESTRIAN AND OTHER VEHICLE MOVEMENTS IN THE AREA. THE ON-SITE STAFF WILL MANEUVER THE BINS OUT OF THE WAY FOR THE COLLECTION VEHICLE TO EXIT FORWARD. THE ON-SITE STAFF MUST DO THIS FOR GARBAGE COLLECTION AT BOTH BUILDINGS. IN THE EVENT THE ON-SITE STAFF IS UNAVAILABLE AT THE TIME THE CITY COLLECTION VEHICLE ARRIVES AT THE SITE, THE COLLECTION VEHICLE WILL LEAVE THE SITE AND NOT RETURN UNTIL THE NEXT SCHEDULED COLLECTION DAY. FAILURE TO COMPLY WITH THIS ARRANGEMENT WILL RESULT IN CANCELLATION OF RESIDENTIAL COLLECTION AT THE SITE.

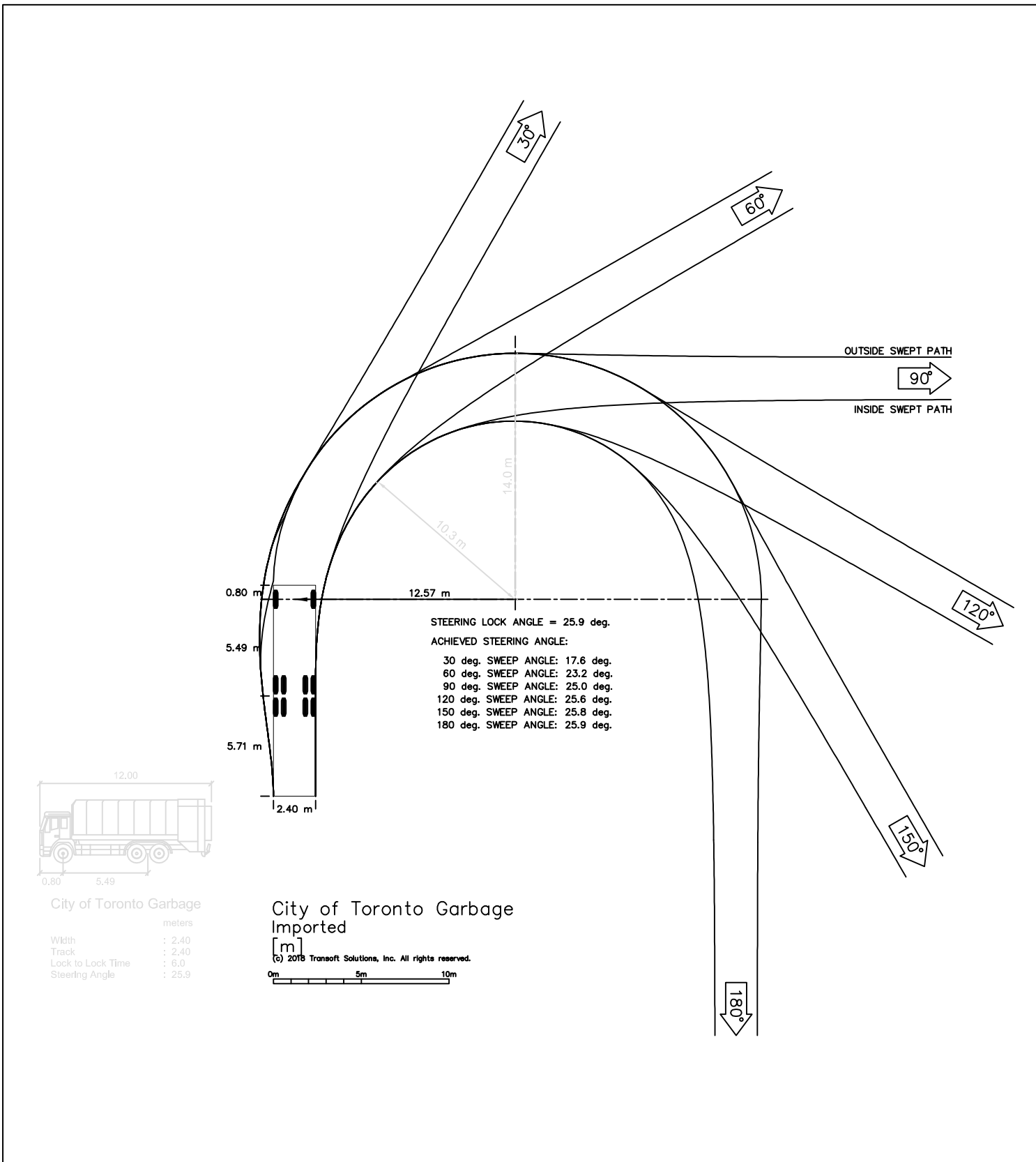
Source: 181206 11 Yorkville-Sheet - A105 - Ground Floor Plan, from Sweeny & Co Architects, May 29, 2019

Scale: 1:250



Figure 2
Flashing Beacon Warning System
11-21 Yorkville Avenue Response to Comments

J:\01 PROJECTS\2017 Jobs\17M-01494-00 - 11-19 Yorkville\CAD\2019-05-21\DWG

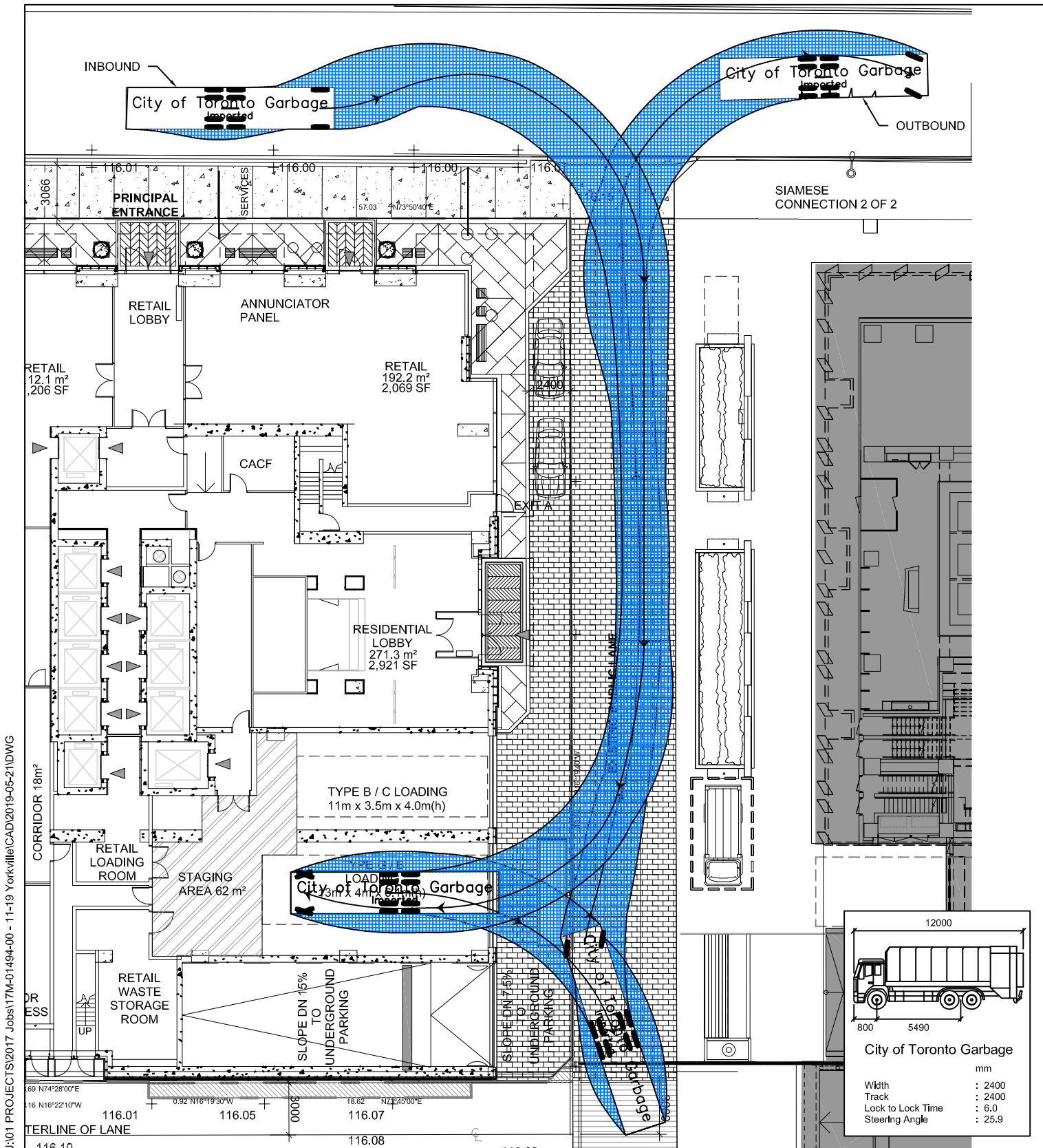


Source: 181206 11 Yorkville-Sheet - A105 - Ground Floor Plan, from Sweeny & Co Architects, May 29, 2019

Scale: 1:300



Figure 3
Garbage Truck Profile
11-21 Yorkville Avenue Response to Comments



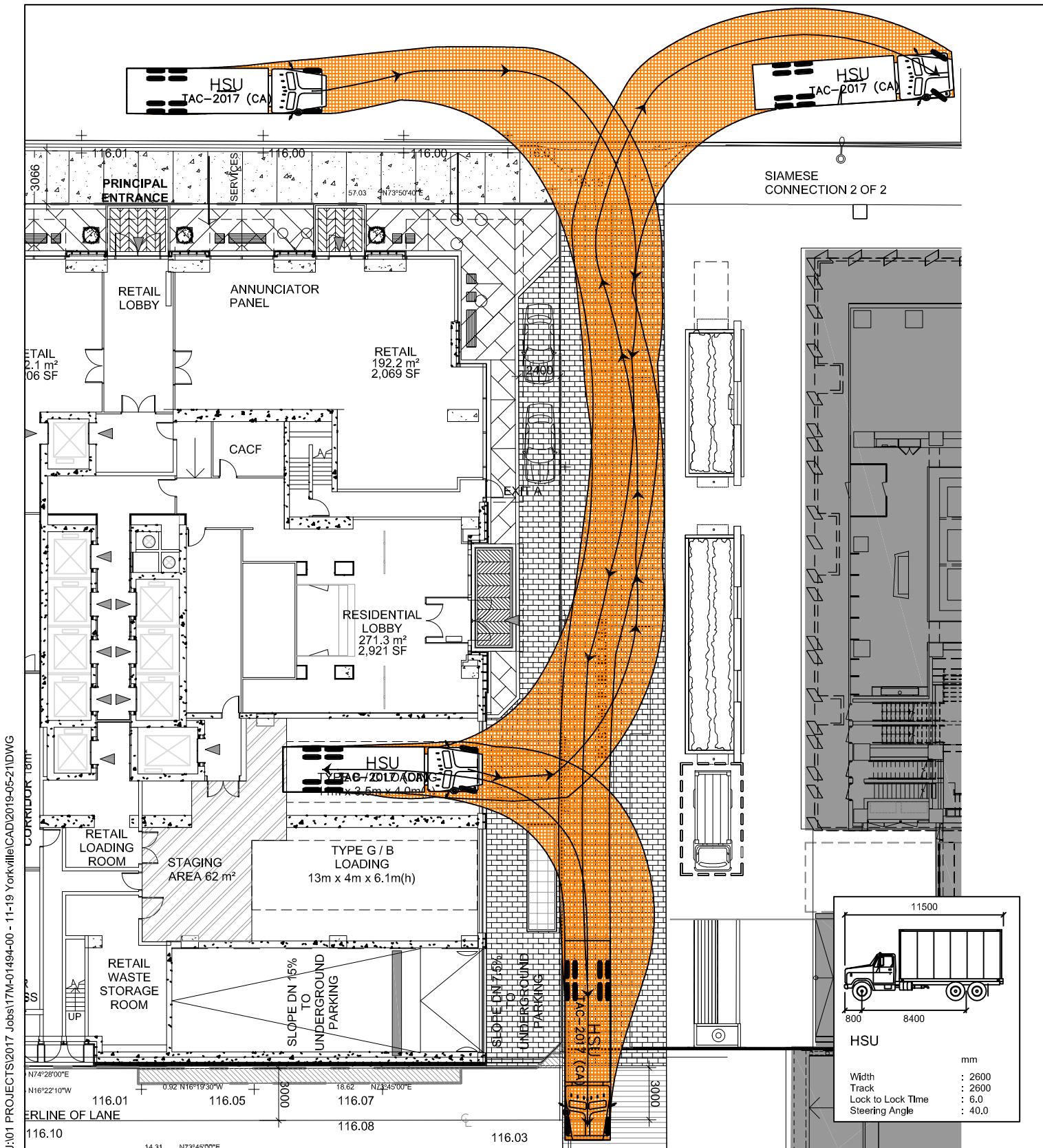
J:\01 PROJECTS\2017 Jobs\17M-01\494-00 - 11-19 Yorkville\CAD\2019-05-21\DWG

Source: 181206 11 Yorkville-Sheet - A105 - Ground Floor Plan, from Sweeney & Co Architects, May 29, 2019

Scale: 1:300



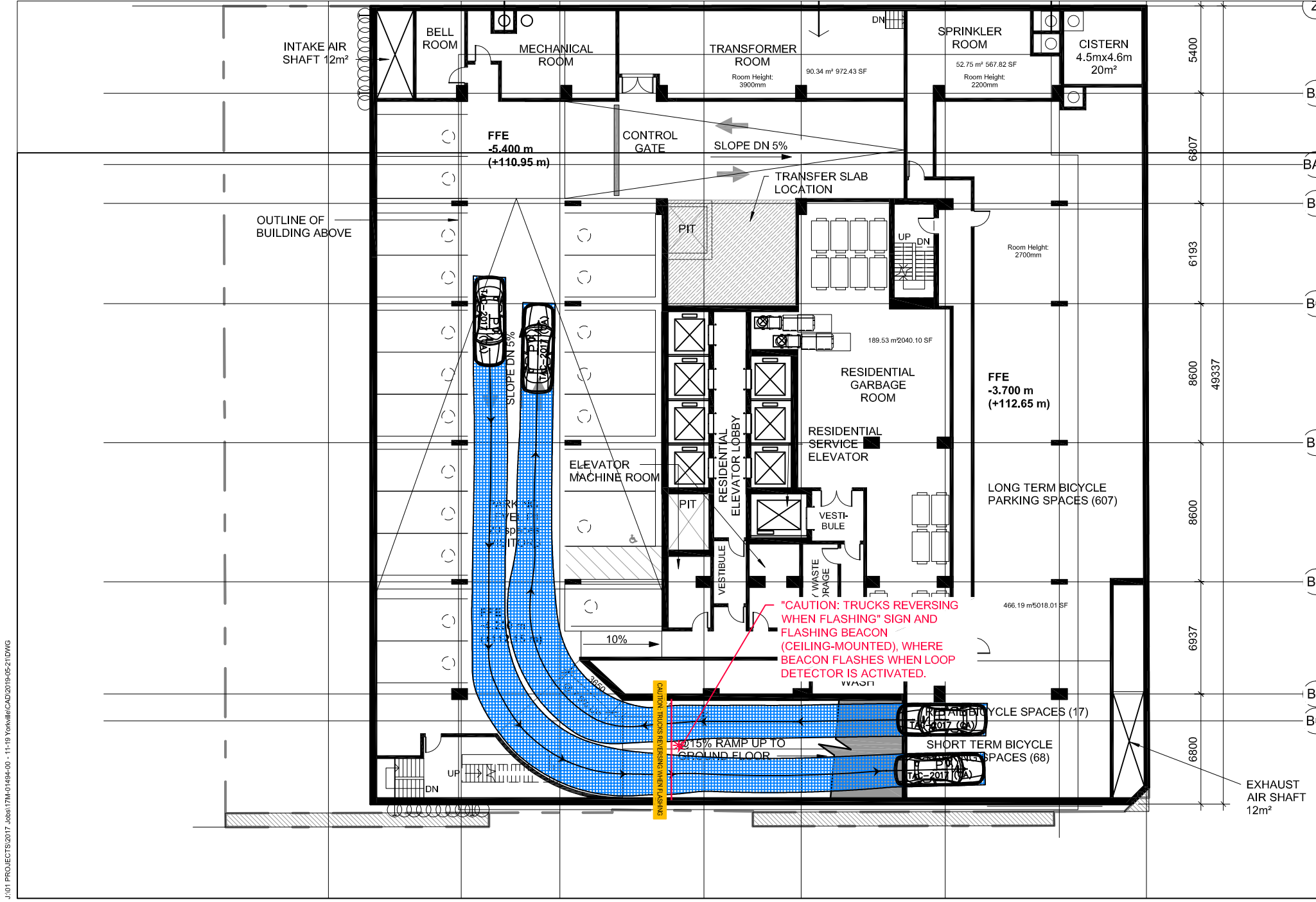
Figure 4
Garbage Truck Entering and Leaving Site
11-21 Yorkville Avenue Response to Comments



J:\01 PROJECTS\2017 Jobs\17M-01\494-00 - 11-19 Yorkville\CAD\2019-05-21\DWG



Figure 5
 HSU Entering and Leaving Type 'B' & 'C' Space
 11-21 Yorkville Avenue



J:\01 PROJECTS\2017_Jobs\17M-01494-00 - 11-19 Yorkville\CAD\2019-05-21\DWG

Source: 11 Yorkville-Sheet - A104 - P1 Floor Plan, from Sweeny & Co Architects, received May 21, 2018

Scale: 1:200



Figure 6
P1 Passenger Vehicle Movements - Ramp Access
11-19 Yorkville Avenue